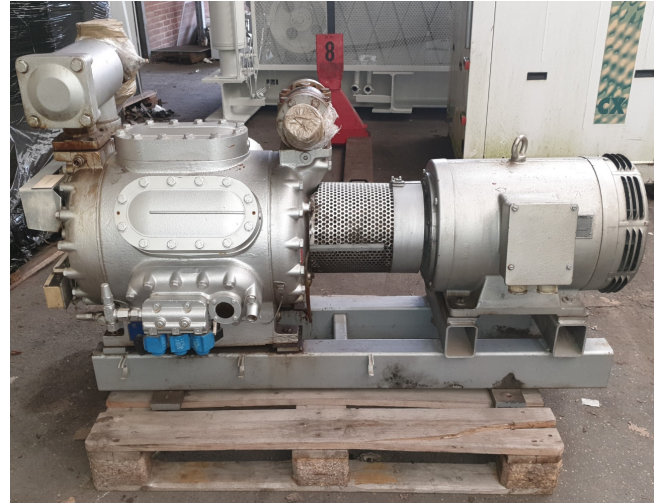


Sabroe CMO 26

Specifications

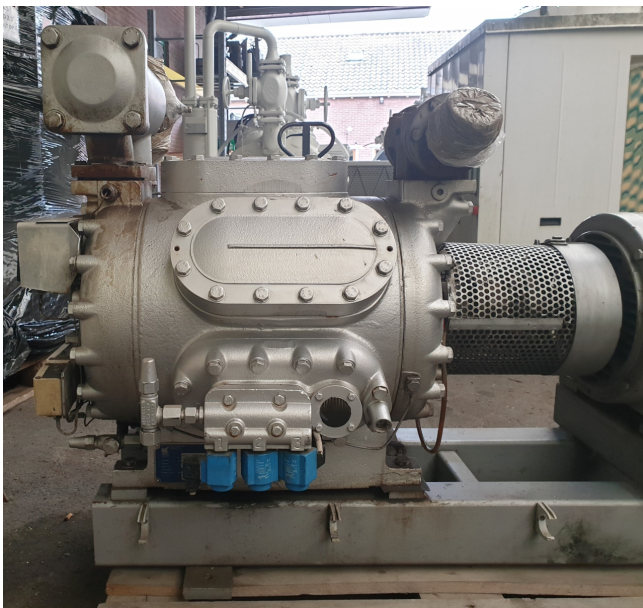
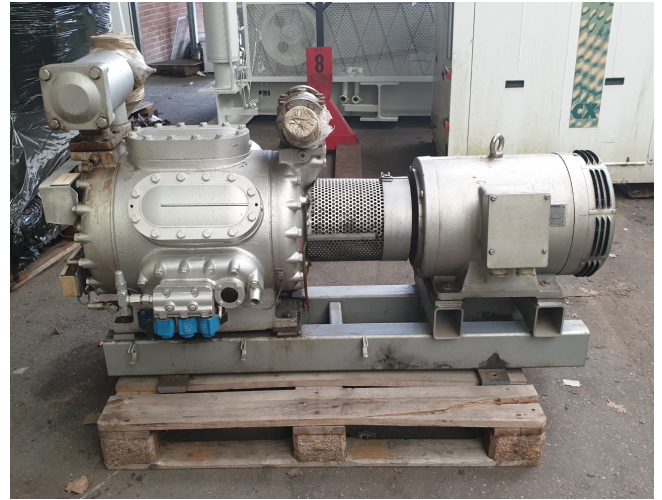
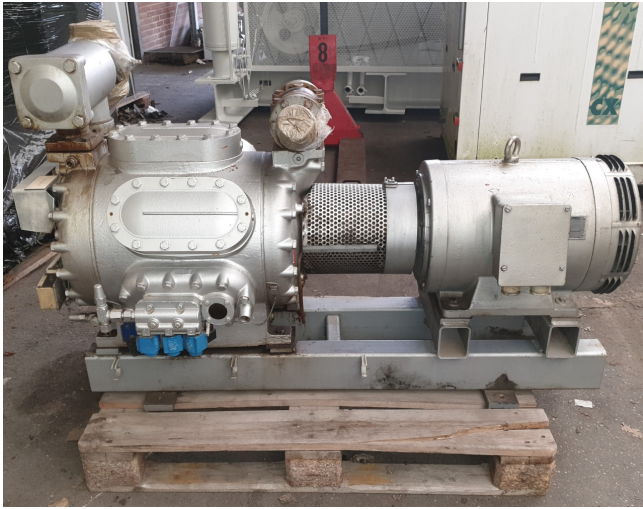
Бренд	Sabroe
Тип	CMO 26
Хладагент	Freon
Refrigerant type	R22 or other types
кВт at +10°C/+40°C	155.7
kW at 0°C/+40°C	106.1
kW at -5°C/+40°C	86
кВт at -10°C/+40°C	68.6
кВт at -20°C/+40°C	41.3
кВт at -30°C/+40°C	22.1
кВт at -40°C/+40°C	9.3
Электродвигатель	30kW at 1440RPM
Спес	
Разгруженный старт	✓
Управление	✓
производительностью	
На стальной раме	✓
Прессостаты	✓
Манометры	✓
Смотровое стекло	✓
Примечания	Y.O.B 2010
Размеры	1450x650x920 mm (LxWxH)
Stock	1

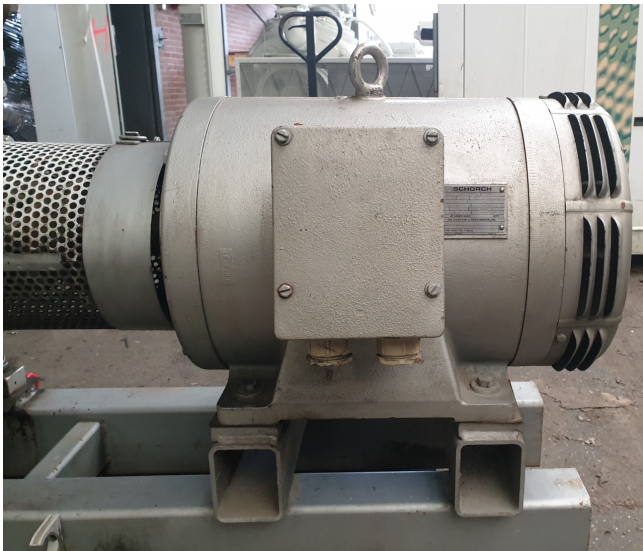
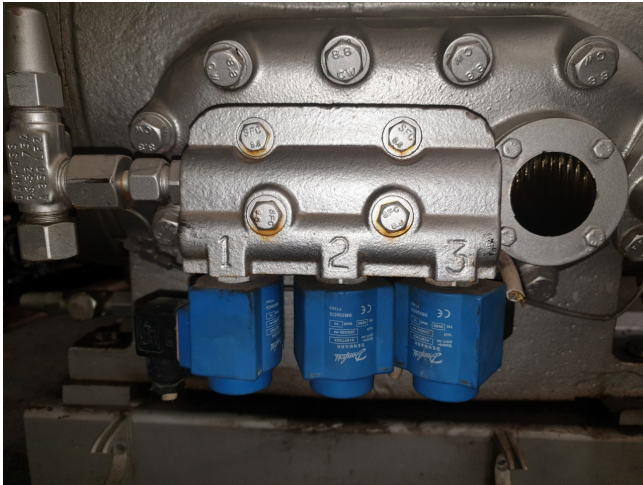


Description

Used Sabroe CMO 26

Used Sabroe CMO 26 single-stage reciprocating compressor with electric motor built by Schorch with 30kW and 1440RPM at 50. *Why choose for HOSBV? We are not only the largest used refrigeration specialist in Europe, but also, we deliver all equipment including an extensive test, warranty and industrial cleaning. *Optional we can also arrange the logistics.





Model	Number of cylinders	Swept volume at 1500 rpm	Swept volume at 1800 rpm	Nominal capacities in kW at 1500 rpm					Dimensions in mm			Weight excluding motor	Sound pressure level at 1500 rpm dB(A)
				R217					Direct coupled unit				
				Single/high stage	Booster	Single/high stage		L	W	H			
CMO 24	4	97	116	53	85	14	85	54	1400-2150	800	900	480	69
CMO 26	6	146	175	79	127	21	109	108	1400-2175	800	900	500	71
CMO 28	8	194	233	105	170	28	139	138	1475-2200	800	900	550	72
CMO 34	4	113	136	62	100	17	99	63	1400-2150	800	900	480	70
CMO 36	6	170	204	93	149	25	149	95	1400-2175	800	900	500	72
CMO 38	8	228	273	122	199	33	198	127	1475-2200	800	900	550	73

Nominal capacities are based on 1500 rpm and 5K liquid subcooling.
 All refrigerants make it possible to operate CMO compressors at speeds of up to 1800 rpm.
 1500 rpm at 50 Hz.
 1800 rpm at 60 Hz or VSD.

JUL 06/11 01 2016



Your partner for used commercial and industrial refrigeration equipment
